

Customer :

customer

Customer part :

customer part

Comment :

Comment

S1=2.29

S2=3.19

Tmax=459

Tp S2=498.0

PI=0.42

HI=125

Sample =1626.10

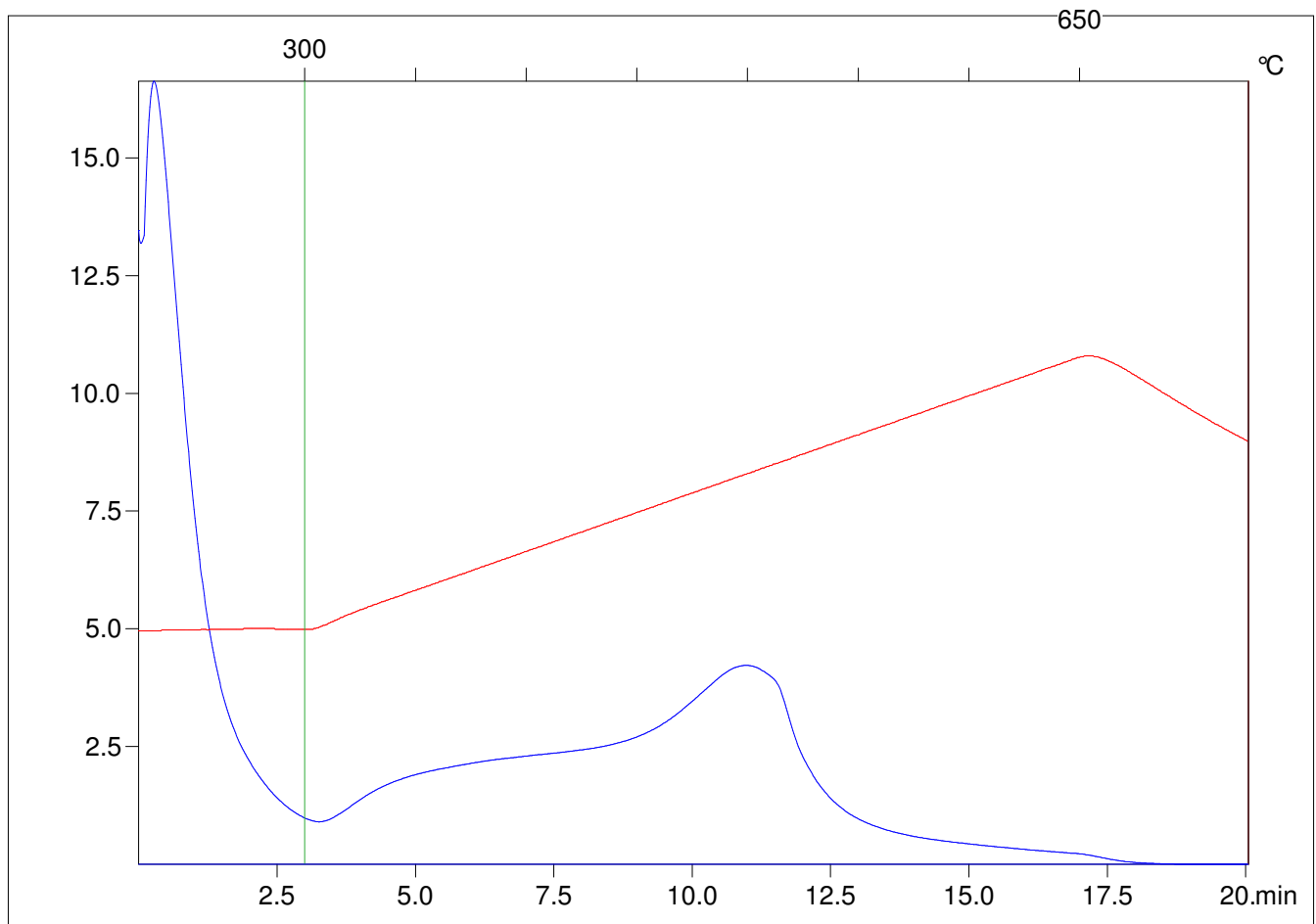
Method =Bulk Rock

Cycle=Basic

KFID(10*9)=1444

Qty =70.4

TOC=2.56



C:\VINC\PK1792\PK010.R00 : FID pyrolysis graphic

State

Pyro Status

Oxi Status